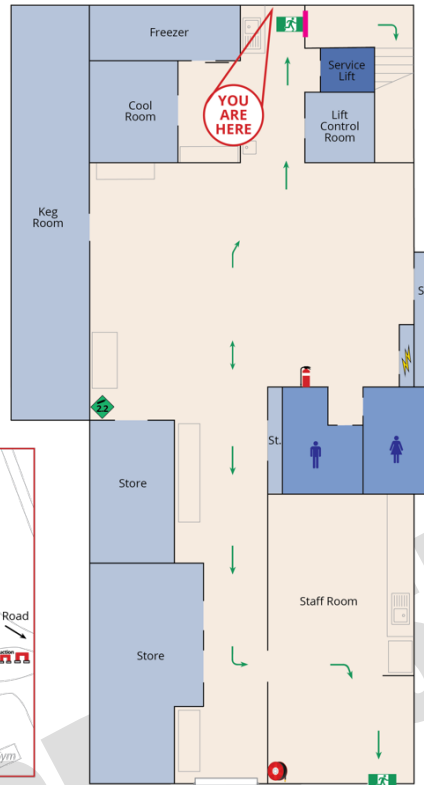
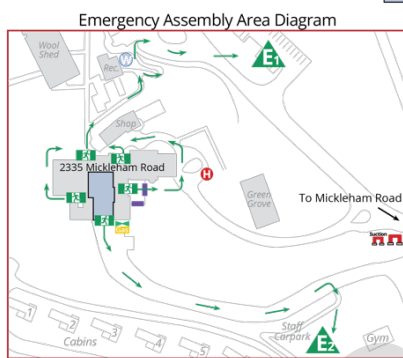


F) Evacuation Diagram - Homestead Basement

MARNONG ESTATE
2335 Mickleham Road, Mickleham VIC 3064
Evacuation Diagram
Homestead - Basement



- Standard Fire Orders**
- 1** If safe, assist anyone in immediate danger
 - 2** Close the door to isolate fire and smoke
 - 3** Call the Fire Brigade on 000 Notify Warden
 - 4** If safe, extinguish fire DO NOT PLACE YOURSELF IN DANGER!
 - 5** If required, or if the Evacuation Tones sound, evacuate to Assembly Area Do NOT use the lift
 - 6** Remain at Assembly Area as directed Account for all occupants

Emergency Warning System

- Alert Tone "Beep... Beep... Beep"**
1. Be aware there is a potential Emergency
 2. Do not commence evacuation, unless it is unsafe in your area as directed by Wardens
 3. Follow all instructions given by Wardens
 4. Await "All Clear" message, OR
- Should an Evacuation be required you will hear an **Evacuation Tone "Whoop... Whoop... Whoop"**
1. Evacuate via exit as directed by Wardens
 2. Do NOT use the lift
 3. Proceed to Assembly Area
 4. Follow all instructions given by Wardens



Issue Date: June 2022
Valid to: June 2027



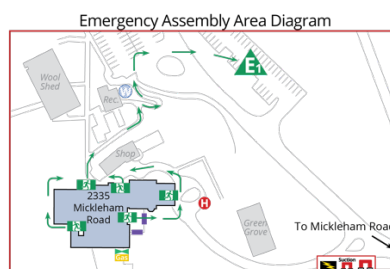
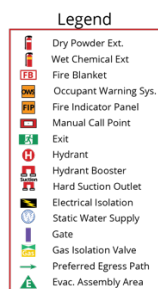
G) Evacuation Diagram - Main Building Ground Floor

MARNONG ESTATE
2335 Mickleham Road,
Mickleham VIC 3064
Evacuation Diagram
Homestead
Ground Floor

- Standard Fire Orders**
- 1** If safe, assist anyone in immediate danger
 - 2** Close the door to isolate fire and smoke
 - 3** Call the Fire Brigade on 000 Notify Warden
 - 4** If safe, extinguish fire DO NOT PLACE YOURSELF IN DANGER!
 - 5** If required, or if the Evacuation Tones sound, evacuate to Assembly Area Do NOT use the lift
 - 6** Remain at Assembly Area as directed Account for all occupants

Emergency Warning System

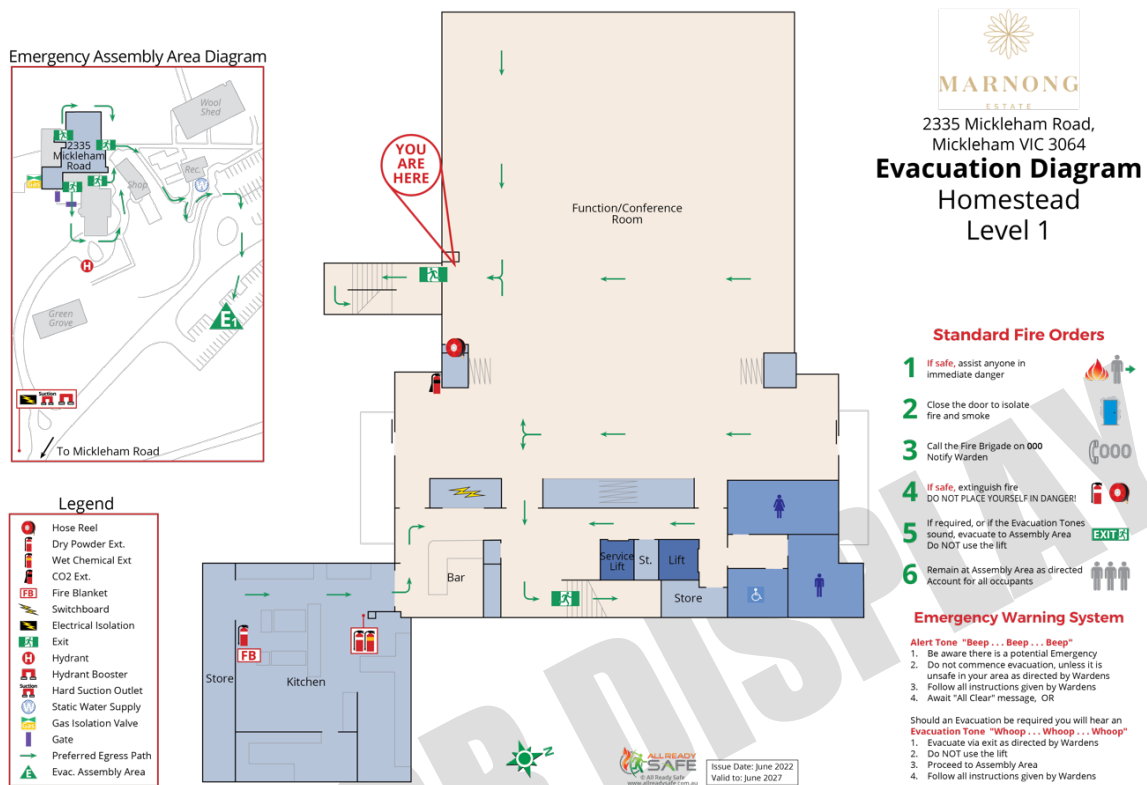
- Alert Tone "Beep... Beep... Beep"**
1. Be aware there is a potential Emergency
 2. Do not commence evacuation, unless it is unsafe in your area as directed by Wardens
 3. Follow all instructions given by Wardens
 4. Await "All Clear" message, OR
- Should an Evacuation be required you will hear an **Evacuation Tone "Whoop... Whoop... Whoop"**
1. Evacuate via exit as directed by Wardens
 2. Do NOT use the lift
 3. Proceed to Assembly Area
 4. Follow all instructions given by Wardens



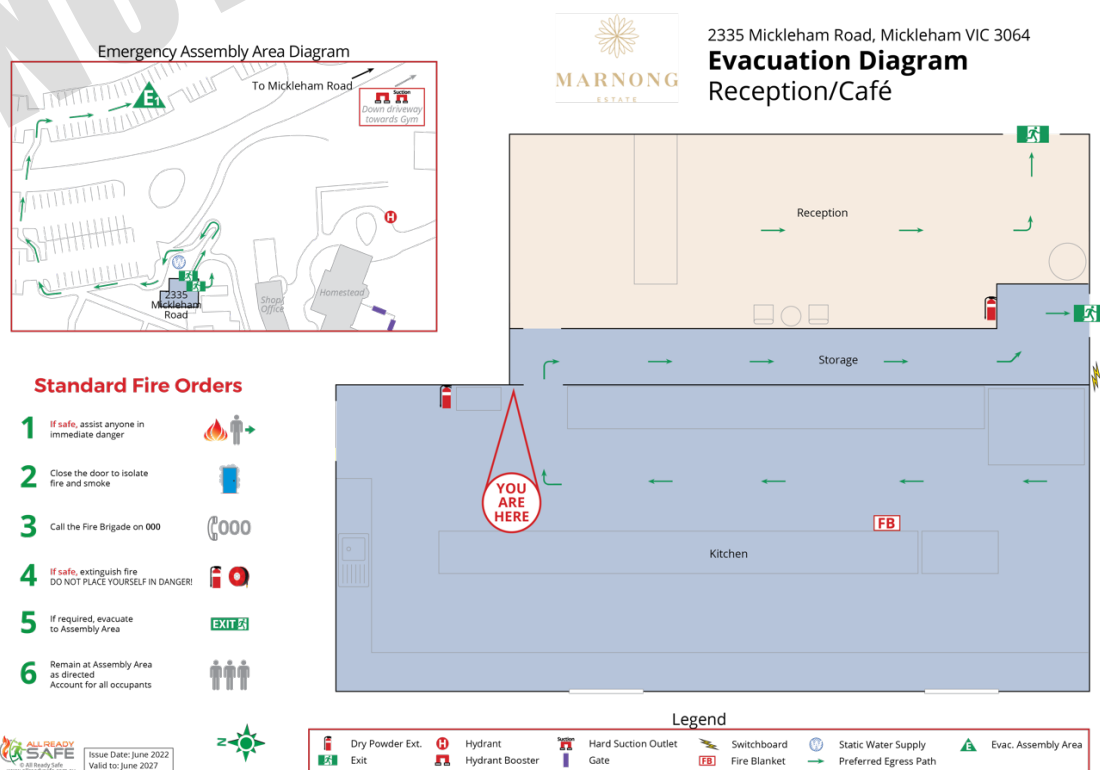
Issue Date: June 2022
Valid to: June 2027



H) Evacuation Diagram – Homestead Level 1

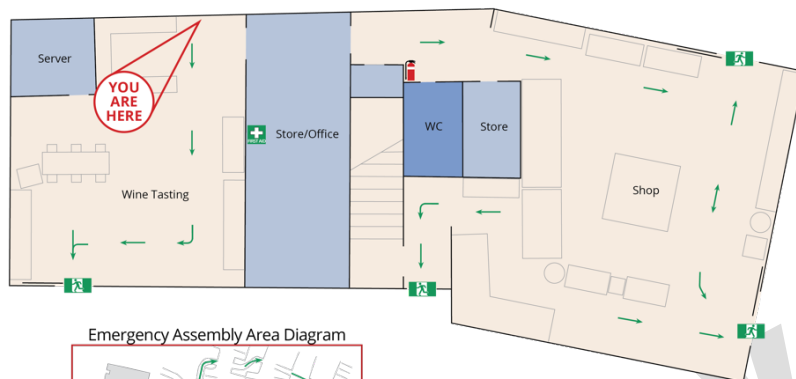


I) Evacuation Diagram – Reception - Cafe



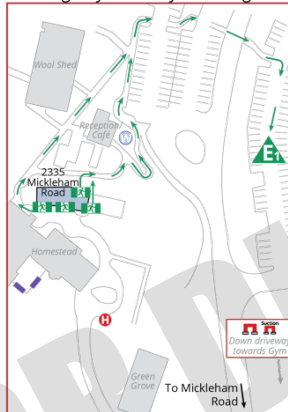
J) Evacuation Diagram – Shop & Office Ground Floor

MARNONG ESTATE
2335 Mickleham Road,
Mickleham VIC 3064
Evacuation Diagram
Shop & Office
Ground Floor



- Standard Fire Orders**
- 1** If safe, assist anyone in immediate danger
 - 2** Close the door to isolate fire and smoke
 - 3** Call the Fire Brigade on 000
 - 4** If safe, extinguish fire DO NOT PLACE YOURSELF IN DANGER!
 - 5** If required, evacuate to Assembly Area
 - 6** Remain at Assembly Area as directed Account for all occupants

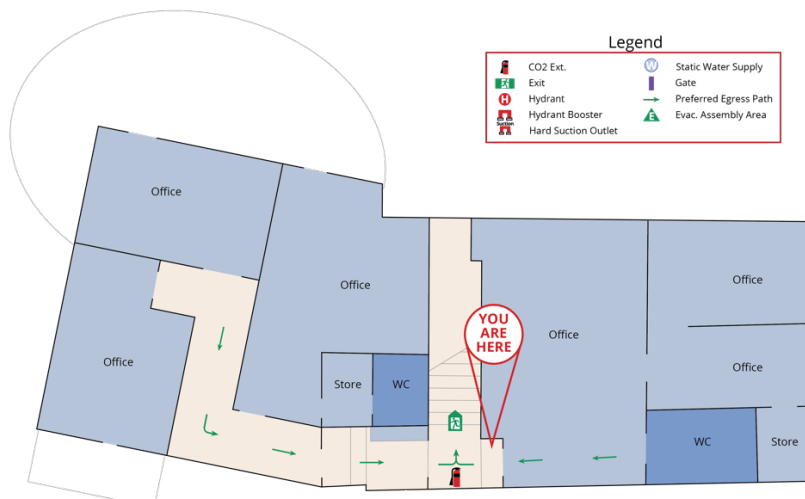
Emergency Assembly Area Diagram



Issue Date: June 2022
Valid to: June 2027

K) Evacuation Diagram – Shop & Office Level 1

MARNONG ESTATE
2335 Mickleham Road,
Mickleham VIC 3064
Evacuation Diagram
Shop & Office
Level 1



Standard Fire Orders

- 1** If safe, assist anyone in immediate danger
- 2** Close the door to isolate fire and smoke
- 3** Call the Fire Brigade on 000
- 4** If safe, extinguish fire DO NOT PLACE YOURSELF IN DANGER!
- 5** If required, evacuate to Assembly Area
- 6** Remain at Assembly Area as directed Account for all occupants



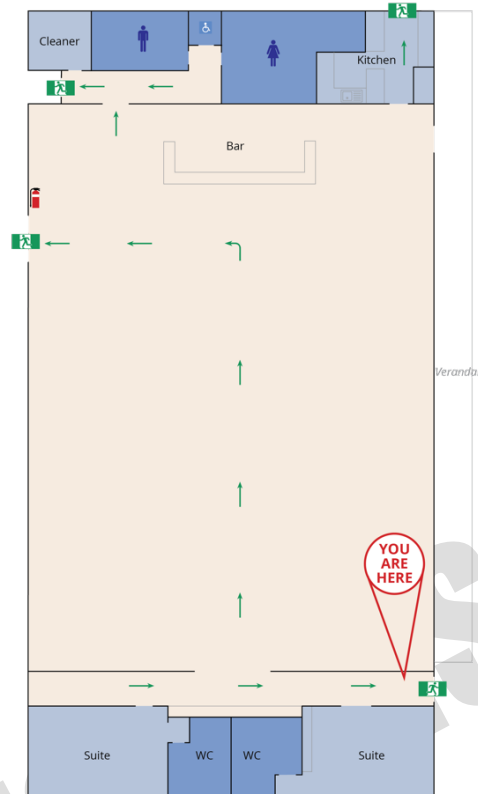
Issue Date: June 2022
Valid to: June 2027

L) Evacuation Diagram – Wool Shed

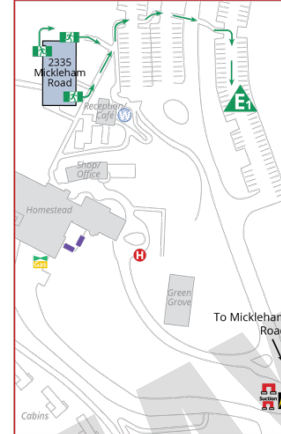
MARNONG
ESTATE
2335 Mickleham Road,
Mickleham VIC 3064
Evacuation Diagram
The Wool Shed

Standard Fire Orders

- 1** If safe, assist anyone in immediate danger
- 2** Close the door to isolate fire and smoke
- 3** Call the Fire Brigade on 000
- 4** If safe, extinguish fire DO NOT PLACE YOURSELF IN DANGER!
- 5** If required, evacuate to Assembly Area
- 6** Remain at Assembly Area as directed Account for all occupants



Emergency Assembly Area Diagram



Legend

- Dry Powder Ext.
- Exit
- Hydrant
- Hydrant Booster
- Hard Suction Outlet
- Static Water Supply
- Gate
- Gas Isolation Valve
- Electrical Isolation
- Preferred Egress Path
- Evac. Assembly Area



Issue Date: June 2022
Valid to: June 2027

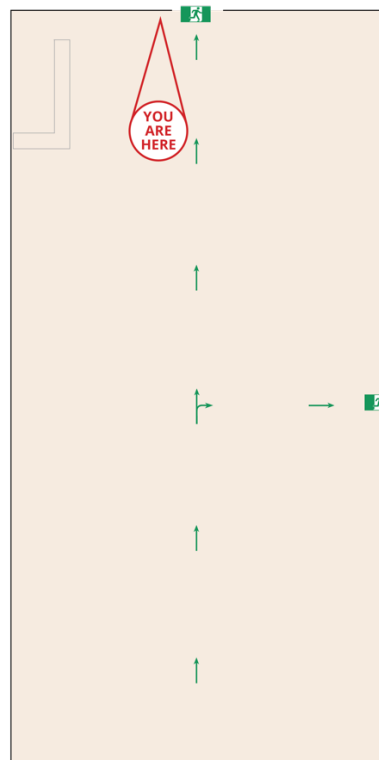


M) Evacuation Diagram – Green Grove

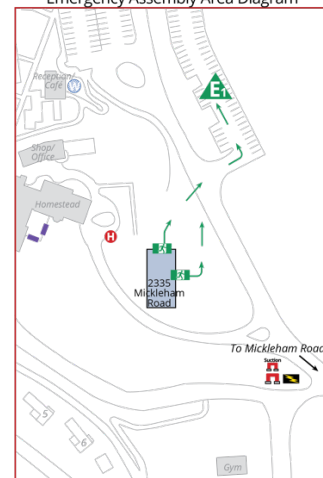
MARNONG
ESTATE
2335 Mickleham Road,
Mickleham VIC 3064
Evacuation Diagram
Green Grove

Standard Fire Orders

- 1** If safe, assist anyone in immediate danger
- 2** Close the door to isolate fire and smoke
- 3** Call the Fire Brigade on 000
- 4** If safe, extinguish fire DO NOT PLACE YOURSELF IN DANGER!
- 5** If required, evacuate to Assembly Area
- 6** Remain at Assembly Area as directed Account for all occupants



Emergency Assembly Area Diagram



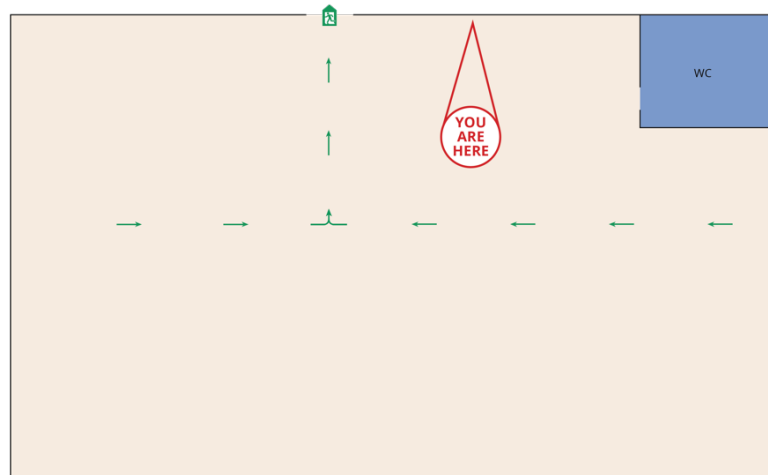
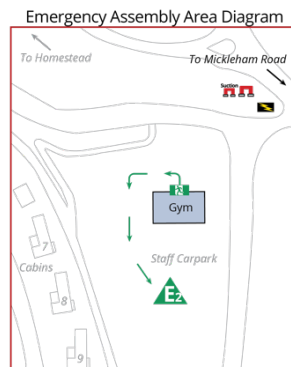
Legend

- Electrical Isolation
- Gate
- Exit
- Hydrant
- Hydrant Booster
- Hard Suction Outlet
- Static Water Supply
- Preferred Egress Path
- Evac. Assembly Area

ALL READY SAFE
Issue Date: June 2022
Valid to: June 2027



N) Evacuation Diagram - Gym



Standard Fire Orders

- 1** If safe, assist anyone in immediate danger
- 2** Close the door to isolate fire and smoke
- 3** Call the Fire Brigade on 000
- 4** If safe, extinguish fire DO NOT PLACE YOURSELF IN DANGER!
- 5** If required, evacuate to Assembly Area
- 6** Remain at Assembly Area as directed Account for all occupants



O) Evacuation Diagram – Cabin Typical



Standard Fire Orders

- 1** If safe, assist anyone in immediate danger
- 2** Close the door to isolate fire and smoke
- 3** Call the Fire Brigade on 000
- 4** If safe, extinguish fire DO NOT PLACE YOURSELF IN DANGER!
- 5** If required, evacuate to Assembly Area
- 6** Remain at Assembly Area as directed Account for all occupants

